



Friendships Bloom on the Land

Strengthening BLT's crop of volunteers

"I like to get out and do one thing every day," says Bill Keto, long-time volunteer land steward for Barnstable Land Trust (BLT). Pass by Bell Farm on any given day and you are likely to see Bill and Ken Ridley mowing, pulling invasive plants, or chopping up blown down trees.

Bill and Ken are part of the Eagle Pond Stewards, one of Barnstable Land Trust's volunteer groups who keep an eye on and maintain our properties. Keeping properties healthy and beautiful is only one of the results of volunteering; long-term friendships, a sense of purpose and value, and healthy outdoor activity are what BLT volunteers get back in return.

Bob Parsons likes to get outside and use his "toys" to steward BLT properties. Bob's toys include a

riding mower and truck, which have provided critical support for major BLT stewardship projects, including moving a dock and pulling out tree stumps.

Over more than 10 years of volunteering, Bob, Bill and Ken have worked thousands of hours. This year, they earned the BLT President's Award, given periodically to honor exceptional commitment, energy and leadership in support of Barnstable Land Trust's work.



Ken Ridley and Bill Keto

"I work more since I retired—because it's fun and I get the satisfaction from seeing the land taken care of."

*Bob Parsons,
BLT Land Stewardship Volunteer*

We have a place for you.

BLT offers lots of fun opportunities to engage: table at a village event, lead a walk, join an envelope-stuffing party, host a picnic, recruit others to volunteer—and more. To learn more, e-mail volunteer@blt.org or call (508) 771-2585 x 100.

With Land Conservation, Persistence Pays Off...

State and Local Incentives Help

Protecting land in Barnstable is a bit like doing a puzzle—all the pieces have to fall into place for it to work.

During the development boom of the 1980s, forward thinking local officials, planners, and advocates put together Barnstable's first Open Space Plan. For over 35 years it has guided efforts to protect the most special and ecologically important landscapes and waterways in town. Parcel by parcel the Town and private land trusts, like BLT, have been fulfilling that vision.

Landowners need to be willing to sell or voluntarily restrict their land. Then approvals are sought and the necessary funds are raised. Because of these factors, conservation can take a long time. Three recent acquisitions demonstrate the patience and persistent follow-through required to acquire strategic parcels.

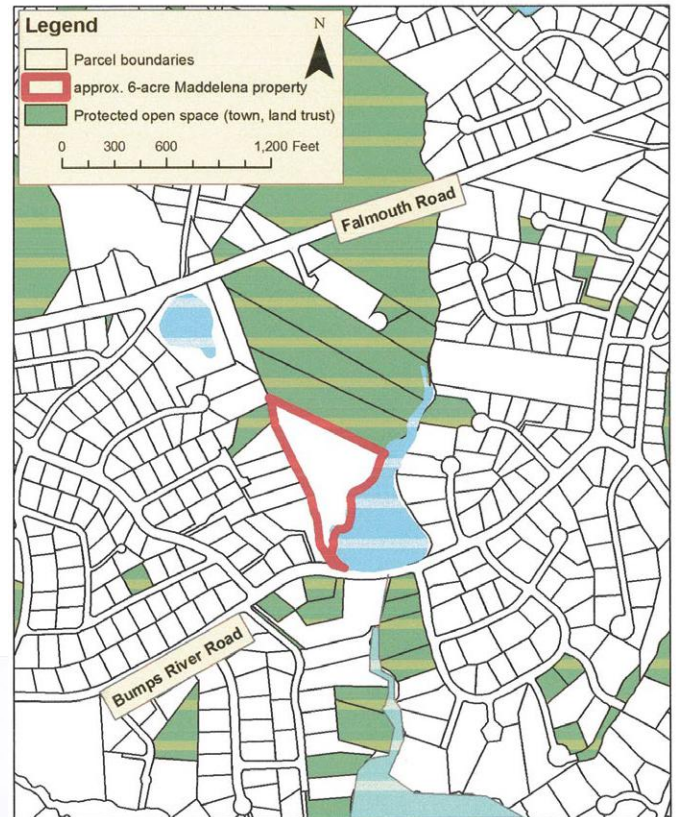
Mill Pond, Centerville

Both BLT and the Town of Barnstable have made significant investments along the sensitive Bumps River Corridor to protect water quality, rare species and a scenic vista.

On the west side of the Mill Pond, one undeveloped property eluded us for over three decades. The pond's scenic character was hanging in the balance.

Three years ago, when Barnstable Land Trust learned there were new owners, we reached out once again. BLT's conservation proposal intrigued the heirs. One by one they signed on and BLT seized the opportunity to develop a conservation partnership with the Town.

In April, thanks to the incentive of the Massachusetts Conservation Land Tax Credit and the Community Preservation Fund, the Town purchased the land. The 6-acre parcel is now permanently protected by a conservation restriction held by BLT.



Outlined in red, the Mill Pond parcel preserves scenic character and water quality along the Bumps River in Centerville.

"In the 80s, protecting parcels along Barnstable's twelve wetland corridors became a community priority. We had no idea what could be achieved. It is truly amazing to see what has been accomplished."

Jaci Barton, BLT's founding Executive Director

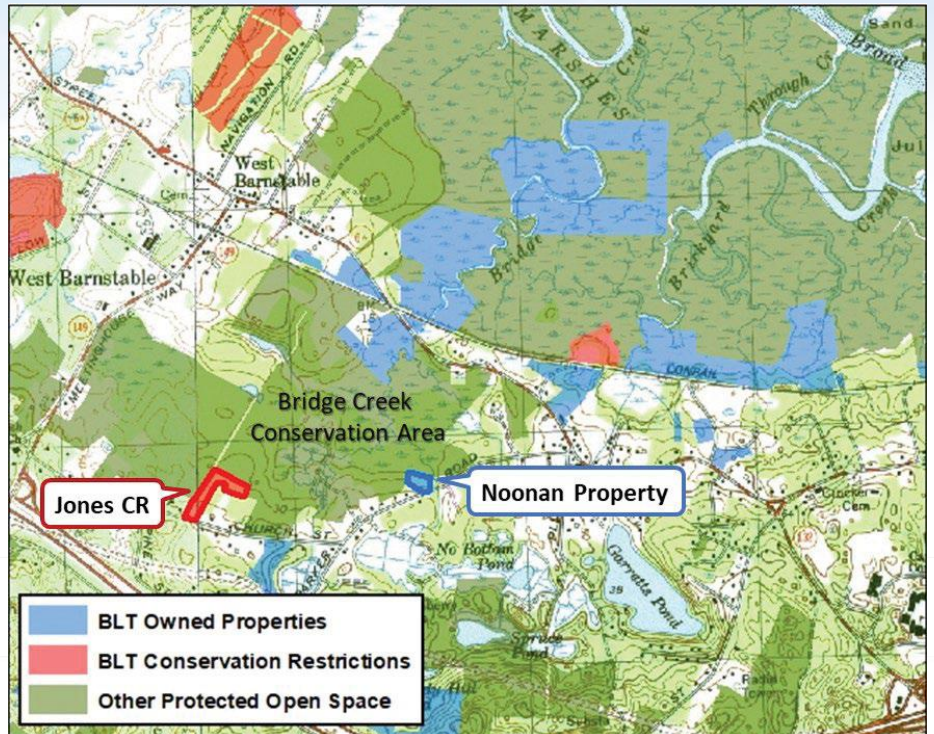
Buffer Land Added to Bridge Creek Conservation Area

Two newly-conserved properties expand protection of the Bridge Creek Conservation Area, one of the largest conservation areas on the north side of Barnstable. The Bridge Creek and Meetinghouse Way Conservation lands total over 200 acres, and have been a major focus of land protection in recent decades to protect the fragile and important wetland ecosystems leading to the Great Marsh.

In January, BLT completed a conservation restriction on 3 acres of land on Church Street, abutting Town conservation land on two sides. In June, BLT acquired 1.5 acres of land at 212 Parker Road in West Barnstable. Both properties lie just down the road from the Shaw's Lane parcel acquired by BLT in 2018.

Visitors can enjoy all of these properties by walking the Cape Cod Pathways trails, which run for over 11 miles across the entire north side of the Town of Barnstable.

For a trail map, go to our website at blt.org.



The most recently protected parcels, outlined in red and blue, add to decades of conservation successes around Bridge Creek and the Great Marsh.



Black-crowned Night Heron at Popolo's Pond behind the BLT headquarters.

Honoring Volunteers and Longtime Visionaries

“The smallest act of kindness is worth more than the grandest intention.”—Oscar Wilde

We celebrated acts of kindness small and large at this year’s Annual Meeting. The President’s Award went to three longtime volunteers: Ken Ridley, Bill Keto and Bob Parsons (pictured right), who have dedicated their time to stewarding the open spaces we preserve. See story on page 1.



Founders Award

Barnstable Land Trust presented the annual Founders Award to Barbara Birdsey for “having the vision to empower the people of Barnstable to preserve the essence of Cape Cod—its open spaces and natural resources, wetlands, woodlands, & wildlife.”

Barbara and her husband Charles helped launch the BLT by donating the first piece of land in 1984. Barbara went on to found Orenda Wildlife Land Trust in 1986, and the Birdsey Cape Wildlife Center, a non-profit wildlife hospital and education center in Barnstable.

A Childhood Dream Fulfilled

Paul Fitzgerald, a resident of Cummaquid for 43 years, grew up in Taunton, visiting and working on the Cape during the summers. Paul shared with us in his own words his Cape experience, and why he supports the Barnstable Land Trust.

To live here is the fulfillment of a dream of my childhood; it is not often that one can realize one’s dreams. The feeling one gets from an open vista to the marshes, the trees, the shoreline, the beaches and tides, can be both aesthetic and spiritual.

We live in an amazing, fragile and unique environment that requires thoughtful action to protect.

The preservation of land is almost as fundamental as the right to breath fresh air and drink clean water. It is a selfless act when individuals decide not to develop buildable land, and instead preserve

it for the future of those that will live here and those that will visit.

BLT and the people who contribute and volunteer are the leaders dedicated to preserving open space in our town.

They are here to educate and guide us in achieving open space preservation, as our community has voted to do over and over for decades. It is time to listen to their message.

Our future is in our hands.

My wife, Bunny, and I are pleased to contribute to the new home of the BLT.



We hope that many will visit the land trust’s new building, walk the trails, listen and learn about the birds that nest and roost here on the pond and the Great Marsh.

Meet Our New Land Steward

Introducing Kelly Barber

“What kept me here on the Cape was the sense of community,” Kelly Barber shared from her office chair. “People here feel a responsibility for the spaces that are here.”

Kelly joined BLT’s staff as Land Stewardship Coordinator in April, replacing Will Holden, BLT’s first full-time land steward. Since she came to the Cape, Kelly has thrown herself into the community, volunteering for the Cape Cod Roller Derby League, Big Brothers Big Sisters, and other local land conservation nonprofits in her spare time.

At BLT, Kelly is learning to leverage volunteer work to accomplish all the projects and maintenance required for the 1,100 acres under BLT stewardship. “It’s definitely a group effort, and the active communication from our volunteers and neighbors helps us assess our needs.”

Kelly works to match volunteer skills, backgrounds and interests with the needs and geography of BLT properties.



Want to volunteer with us? Contact the office today or go online and fill out our volunteer survey at blt.org/volunteer.

Tour de Barnstable 2019

A Family Affair

The entire Berkey family enjoyed the 2019 Tour de Barnstable. BLT Board member Pattie volunteered on the route to guide riders through Cotuit, while husband Scott and daughters Alli and Betsy (pictured right) joined the 38-mile ride, raising \$862 for Barnstable Land Trust.

“This is a great opportunity to do something together with family or friends, and it’s for a great cause,” expressed Scott.

“For us it was a way to get involved but also learn more about what BLT does,” Alli told BLT. “We got to see everything yard by yard almost. It was a tour of impactful views going from one side of Barnstable to the other, seeing how great the space is, but also how important it is to keep the open spaces and conservation lands the way they are, and how they impact the community around them.”



Save the Date:

Tour de Barnstable 2020 is June 7th
Who is coming out to ride with us?!



With Gratitude

Thank you for honoring those you care for and supporting their love of nature

In honor of

Hugh Dangler
From David & Kathryn Dangler

BLT Volunteers
From Alexandra Lahr

Carl Riedell
From William & Zora Skelton

Leslie Massa
From Kenneth & Betsy Groth

Meg and Billy Lloyd
From Michael Dannhauser

Gil Newton
From Nancy & Roland Wigley

Graham & Joanne Harrison
From Michael & Anne Lloyd

Graham Harrison
From Bill & Phyllis Walsh

Herb & Nina Greenwald
From Michael & Anne Lloyd
Fred & Judy Tirrell

Joyce Kazanjian
From Carla Kazanjian

Mary-Gaines Standish
From Peggy Standish

Nancy Colbert
From Jim Colbert

In memory of

Earle & Catherine
From Earline MacDowell

Andrew Craig III
From John & Connie McPheeters

Bernice Ann Munsey
From Everard Munsey

Billy Waechter
From Anna Maria Waechter

Bruce Thompson
From Nancy & Jim Lewis
Richard Diamond
Victoria Graves

Claudia Morner
From Richard & Barbara Kiusalis

Don Leber
From Robert Burkhard
Anne Hanyen
Steven Nelson
David & Rosalie Grenon
Terry & Barbara Goodfellow
L. Paul Goyette
Sharon Dee
Robert Nichols
Pryce Boeys
Mary Kay & Stephen Wysham
Marlene & Dennis Hurley
Michael & Margaret Alteri
John & Susan Schofield
The Cummaquid Monday A.M.
Seniors
Tom & Nancy Whiteley
Claire Nelson
Patricia Greene
David & Colleen White
Robert Naylor
Joan Wysham
Ann Brockelman
Susan Weidner
Matthew Leber
Charles Leber

Elliot Robinson
From Hugh Calkins

Estelle Needleman
From Andrew Frishman & Leigh
Anne Needleman

Elizabeth Nill
From Ted & Gretchen Hibben
Gordon & Louise Nelson

George Kovatch
From Diane Gibson

Jim Jenkins
From Susan Jenkins
Dan & Janet Mullen

Joan Neuwirth & Margaret Bianchi
From Roanne Neuwirth &
Richard Goldberg

John Enos Frazier, Francis Enos
Frazier & Nancy Elizabeth Frazier
From Robert Frazier

John Peck
From Guy & Nancy Jackson

Kathleen R. Shea
From Peter & Catherine Smith

Kenneth Mercer
From Jon & Eliza Lewis

Marianne Philbrick
From Tom Philbrick

Mrs. Ernest A. Eddy
From Sallie Neubauer

Owen Duff, Bob Leombruno,
Sue & Fred Buschner, and
Evelyn Mullen
From Marge Mercer

Phil Brennan
From Richard & Barbara Kiusalis

Sam Keavy
From Margaret Doyle
Meredith Wannie
The Lawrence Bennet Trust
Steve & Allison Falkenberry
Marcia Wisniewski
James Ray
Mary Nowd & Mary Jo Mugnier
Jean Keavy

The Leeman Family
From Virginia Leeman Johnson

The Ropes Family
From Sally Hinkle

Timothy & Ellen Coggeshall
From Caroline Coggeshall & David
Banta

Virginia Teel
From Robert & Cynthia Lister

Edward Otis Handy, Jr.
From Ned & Margaret Handy
Carol & Bertram Lummus
The Handy Family Charitable Fund

Al Stone
From Anita Weinblatt

Bryan & David Rooney
From Ellen Rooney

Red Bansfield
From Donald & Elizabeth Mossa
John Ieni

Carol Ann Hurley
From Joyce Kazanjian
Faith Stewart
Peter & Susan Morgan

Dexter Len
From Joanne Lyman

Ellen Culver
From John Culver

Francis G. Jenkins
From Richard & Sarah Sammis
Geoffrey Guy Schneider
Jody St. Hilaire

Virginia "Ginger" Carothers
From Valerie Theberge

H. Seely Thomas, Jr.
From John & Catherine Langley

Helen & Martin Wirtanen
From Mark Wirtanen &
Terrie Reilly

Joel Davis
From David & Kathryn Dangler

John and Jean Quigley
From Mark & Kristen Coe

John Fitzpatrick
From Judy Fitzpatrick

Kenneth Walcott Powers
From Gary & Jane Frieders

Malcolm B. Burrell
From John Skowronski

Mrs. Charles Almy
From John Bidwell

Richard Largay
From Tim & Karen Largay

Ron Reed
From Barbara Reed

Sue Sarah Tremer
From Tim & Beth Herrick

Theresa Zeglen
From Nancy Zeglen

James C. Murphy
From Jon & Eliza Lewis

Jonathan Taylor & Midge Eddy
From Marmee Taylor

Lark Leonard
From David & Kathryn Dangler

Anne Nisula
From David & Caroline Case
Lucy Culver

Elizabeth C. Pearsons
From Elizabeth Nill

9/1/19

*"When we walk
on the earth with
reverence, beauty
will decide to
trust us."*

John O'Donohue



Our Friends' Wishes

A maple tree in Ropes Field. A marsh vista on Barnstable Harbor. These iconic places are in our hearts, bringing a smile to our face and a feeling of joy the moment they come into view. How good it is to know that the lands in conservation will remain protected forever, even after we are gone.

We lost two of our long-time friends this year, Ursula Brandt and Elizabeth Nill. Both cared deeply about their community. Their bequests to Barnstable Land Trust will ensure that the places that meant so much to them will enjoy protection in perpetuity. Ursula and Liz each left a legacy from which all of us, and future generations, will benefit. We remember them, honor them, and thank them.

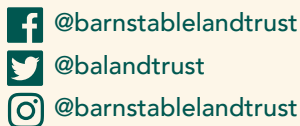
Call us to learn more about leaving a bequest: 508-771-258.



Barnstable Land Trust
1540 Main Street
West Barnstable, MA 02668

Tel: 508.771.2585

BLT.org



BOARD OF DIRECTORS

PRESIDENT

Joseph Hawley | *Centerville*

VICE PRESIDENT

Karen Daley | *Cotuit*

TREASURER

Rob Carey | *East Sandwich*

CLERK

Pattie Berkey | *Cotuit*

Wendy Barker | *Marstons Mills*

Polly Dana-Schumacher | *Barnstable*

Karen Hanesian | *Cotuit*

Justine Laugharn | *Barnstable*

Beth Odence | *Cotuit*

Terrie Reilly | *West Barnstable*

Deborah Reuman | *Barnstable*

Leigh Townes | *Cotuit*

STAFF

EXECUTIVE DIRECTOR

Janet Milkman

DIRECTOR OF DEVELOPMENT

Jane Harvey

LAND STEWARDSHIP COORDINATOR

Kelly Barber

LAND PROTECTION SPECIALIST

Jaci Barton

DIRECTOR OF ADMINISTRATION & OUTREACH

Lillie Peterson-Wirtanen

Barnstable Land Trust is a non-profit charitable 501(c)(3) organization, registered with the Massachusetts Attorney General with ID #22-2483963. Your gifts are tax deductible within the extent of the law.

Printed on recycled paper with vegetable-based inks.

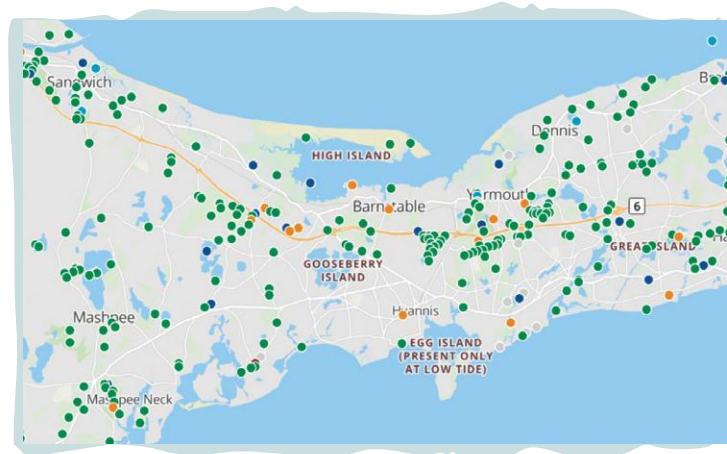
The mission of the Barnstable Land Trust is to protect the special places people love for present and future generations.

Non-Profit
Organization
U.S. Postage
PAID
Permit No. 11
Osterville, MA

Taking Screen Time on a Field Trip

How our devices can bring us outdoors

Many of us grew up in a “free range” outdoor lifestyle—with lots of unstructured and creative time outside. These days, kids are much more likely to spend time on some kind of screen than running around exploring outdoors. Research has found that kids spend an average of 5-10 hours per day on screens and just 7 minutes of unstructured time outdoors.



Map of geocaching sites on Cape Cod.

At BLT’s Annual Meeting in July, NPR Science Editor Heather Goldstone shared ways to use our new technology to connect children and grown-ups to the outdoors. Heather shared the example of “geocaching”—a sort of treasure hunt that can take you all over the Cape, searching for special caches of all kinds of objects.

To learn more... For positive impacts of nature on health and well being, go to childrenandnature.org. For geocaching on the Cape, go to geocaching.com.



Have you picked up your BLT hat yet?

We have t-shirts and beanies available and we are taking pre-orders for BLT jackets and fleeces. Visit blt.org to get a look and pre-order yours.

Thank you for your generous support

**CAPE
COD5**