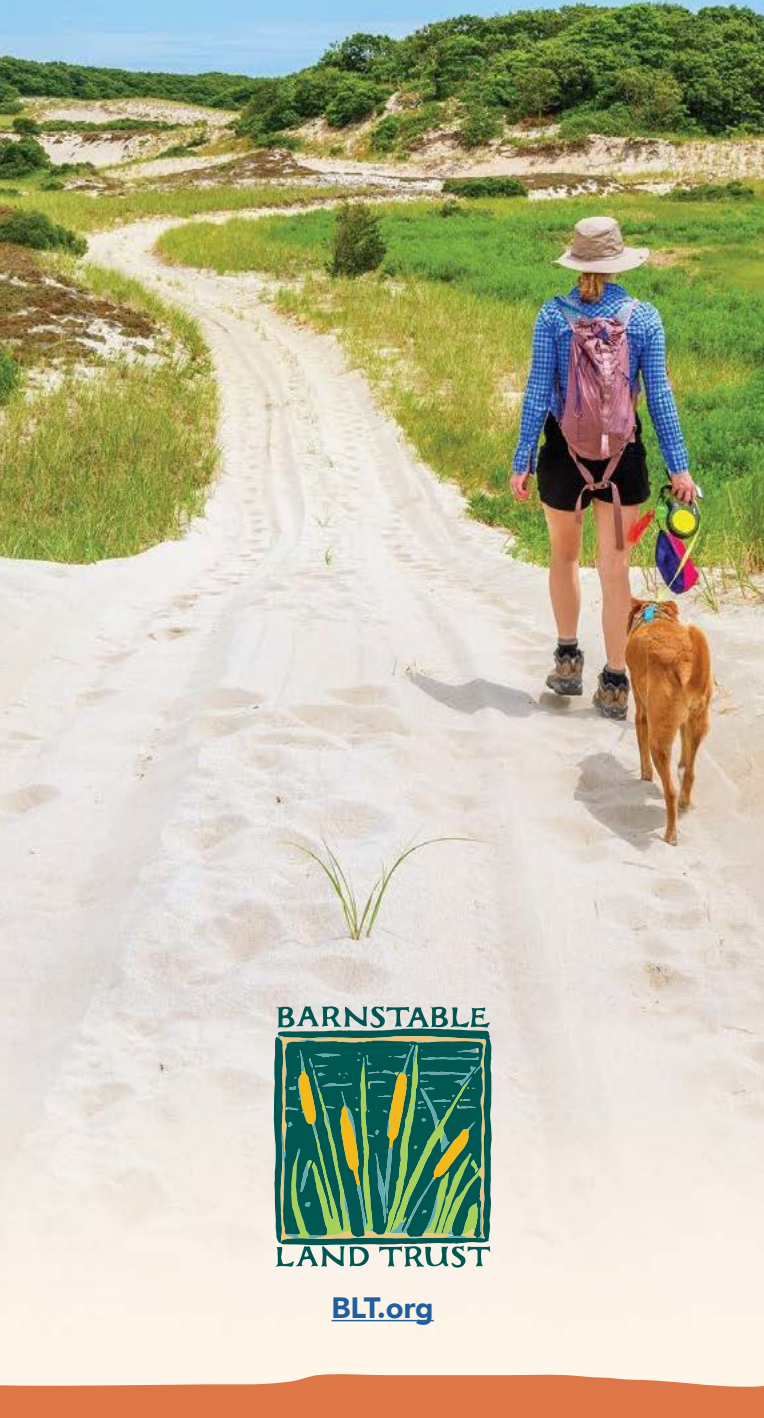


Barnstable Trail Guide



About Barnstable Land Trust

Barnstable Land Trust (BLT) is a community-supported nonprofit whose mission is to preserve the natural resources and special places in the Town of Barnstable and nearby areas. We have conserved over 1,100 acres, and supported the Town in protecting over 11,000 more.

To support our work, consider becoming a member!

Visit BLT.org or use this QR code to support our work today.



Barnstable Land Trust
1540 Main Street
West Barnstable, MA 02668
Tel: 508.771.2585
BLT.org
@barnstablelandtrust

Are you interested in conserving your land? Contact Barnstable Land Trust at (508) 771-2585 or info@blt.org to discuss conserving your land.

Front cover: Sandy Neck by Matthew Raifman. Eagle Pond (above) by Beth Greeley.

Rules & Information

- No motorized vehicles of any sort (including e-bikes) on ANY open space in the Town of Barnstable.
- No camping and no fires.
- Note: some beaches and ways to water are open to Town residents only. Please check the [Town of Barnstable](http://TownofBarnstable.com) website for more information.

Tick & Poison Ivy Safety

Always prepare for ticks and poison ivy.

Ticks can be active any time of year, even winter. Tuck your pants into your socks, and your shirt into your pants. Wear light colors to spot ticks more easily. Wearing insect repellent or treating your clothes with permethrin adds another layer of protection.

Poison ivy is most noticeable from spring through fall, but the oils can transfer from a broken leaf or branch any time of year. Washing your hands after lacing up or removing your hiking boots can help protect you from transferring the oils to skin and causing a rash.



Trail Etiquette

When hiking on any trail, it's best to follow the Leave No Trace principles.

These principles include that you pack out what you bring in (including any trash or pet waste), stay on the trail, and leave natural features as you find them (rocks, plants, wildlife, etc.).

If you find something extra special that you want to remember or share, take a picture or a video and leave it for others to discover and appreciate. Learn more at LNT.org.

Hunting Rules

It's important to be aware of hunting year-round.

To stay safe and visible to hunters, be sure to wear bright colors. Hunting is allowed on certain conservation parcels as long as state and federal laws are followed.

Check the [Town of Barnstable](http://TownofBarnstable.com) website to know where hunting is allowed and when the hunting season is open.

Hunting is prohibited on all Barnstable Land Trust hiking trails included in this map.

Wildlife Sanctuaries

Trails marked with a wildlife sanctuary symbol convey that this area is protected specifically to support sensitive wildlife and wildlife habitat.

While we value community access to wild and beautiful places, dogs are not allowed on trails within wildlife sanctuaries.

Perceived as predators, dogs can cause alarm and stress to wildlife, resulting in reduced wildlife activity during the day or avoidance of areas altogether.

Additionally, when left on trails, dog waste harms the environment by degrading the water that both animals and humans drink, and can potentially spread disease to vulnerable wildlife.

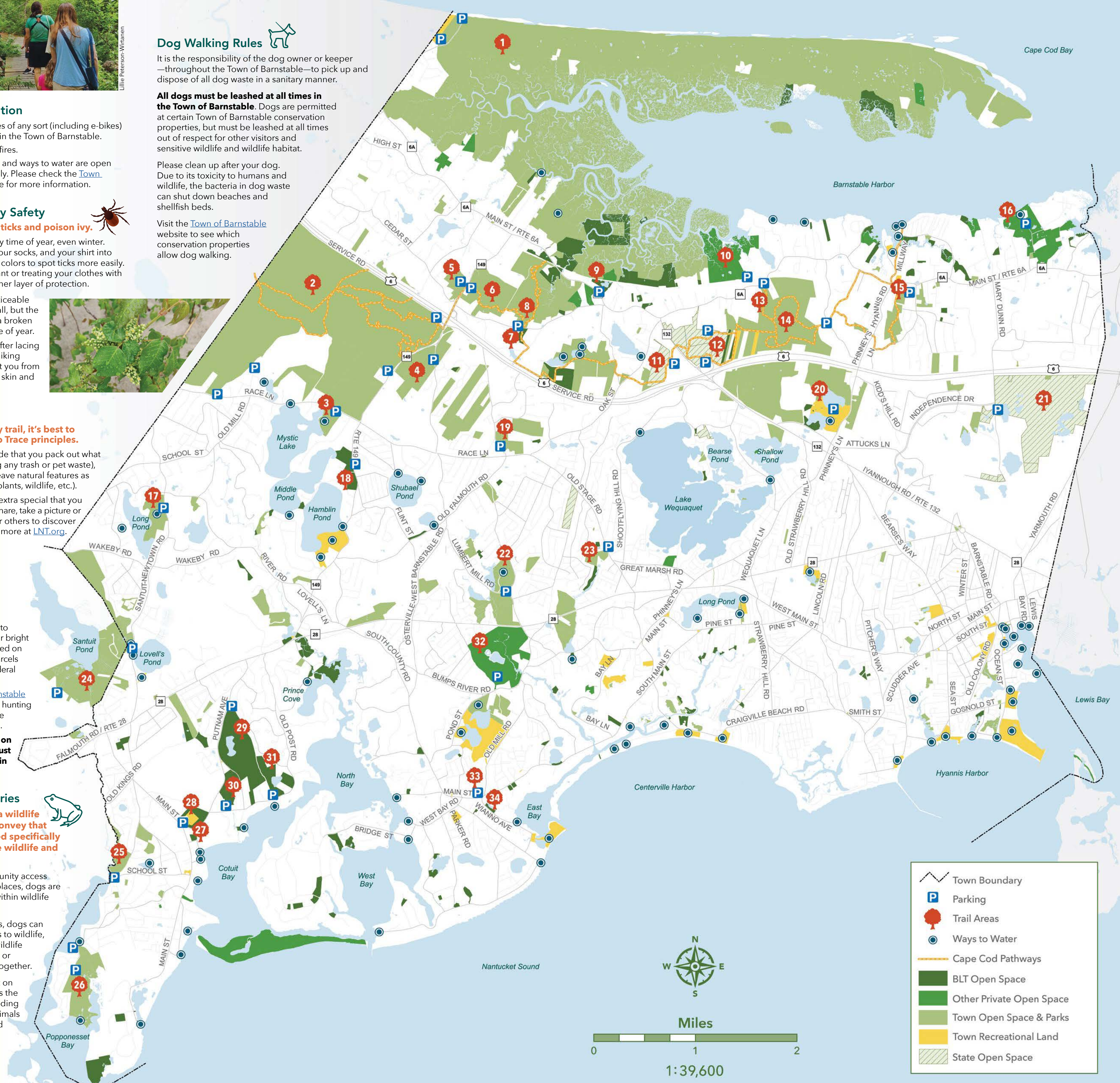
Dog Walking Rules

It is the responsibility of the dog owner or keeper—throughout the Town of Barnstable—to pick up and dispose of all dog waste in a sanitary manner.

All dogs must be leashed at all times in the Town of Barnstable. Dogs are permitted at certain Town of Barnstable conservation properties, but must be leashed at all times out of respect for other visitors and sensitive wildlife and wildlife habitat.

Please clean up after your dog. Due to its toxicity to humans and wildlife, the bacteria in dog waste can shut down beaches and shellfish beds.

Visit the [Town of Barnstable](http://TownofBarnstable.com) website to see which conservation properties allow dog walking.



	Town Boundary
	Parking
	Trail Areas
	Ways to Water
	Cape Cod Pathways
	BLT Open Space
	Other Private Open Space
	Town Open Space & Parks
	Town Recreational Land
	State Open Space

